

Wireless Bridge SX-BR-4600WAN Setup Guide

Thank you for purchasing the Wired LAN-to-Wireless LAN bridge, Wireless Bridge SX-BR-4600WAN (hereinafter, "This product").

This product is the wireless bridge which can add a wireless connection feature to non-wireless devices with a 10/100/1000BASE-T wired LAN interface. In addition to printers with a wired LAN port, various devices such as surveillance cameras, etc. can easily be connected to a wireless LAN. Also, wireless security feature of this product will allow secure use of your network devices.

This Setup Guide explains how to setup and use this product in a wireless network.



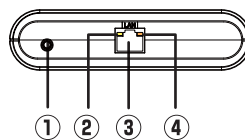
Package contents

Following items are bundled with this product.

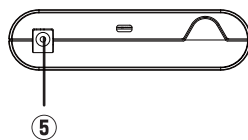
- Wireless Bridge SX-BR-4600WAN
- Power supply
- Network cable
- Setup Guide (this document)
- Warranty booklet
- GPL license notice (Distribution of source code licensed under the open source software license)

Parts and function

FRONT

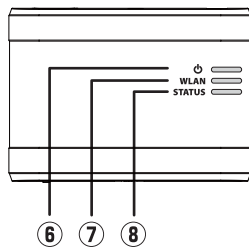


BACK

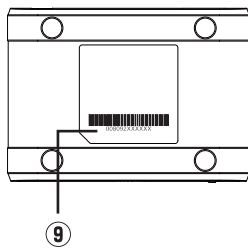


① Push switch	Starts this product in Configuration Mode: Press and hold the push switch for 5 sec while this product is active. Resets this product to factory default settings: Press and hold the push switch while turning on this product. Release the switch when the Link LED turns to Orange and then Green.
② Status LED (Yellow)	BLINK : Waiting for connection when Link LED is OFF. Transferring data when Link LED is ON.
③ LAN port	Connects to the network cable.
④ Link LED (Green/Orange)	ON(Green): Connected to 10BASE-T/100BASE-TX network ON(Orange): Connected to 1000BASE-T network
⑤ Power connector	Connect AC adapter.

TOP



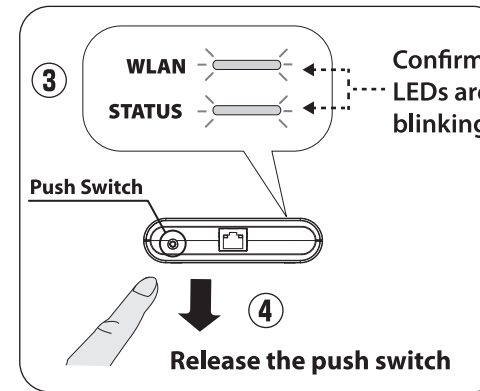
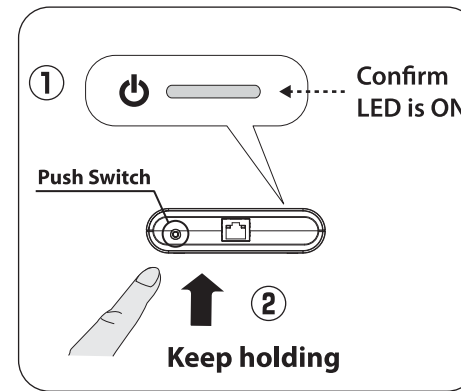
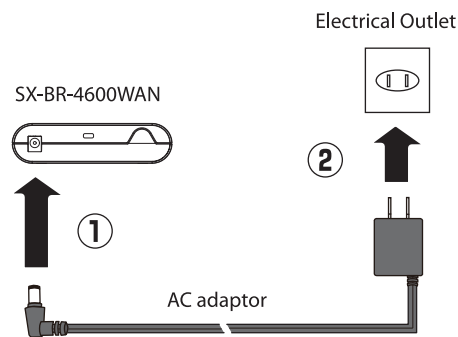
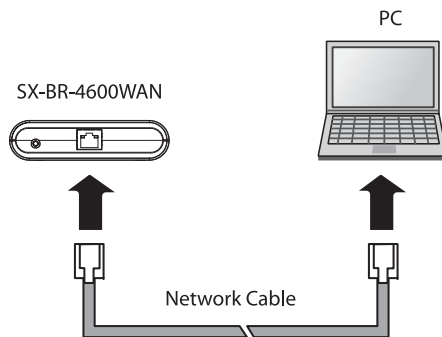
BOTTOM



⑥ POWER LED (Orange)	Turns ON when this product is powered on.
⑦ WLAN LED (Green)	ON : Running in Infrastructure mode. OFF : Running in Ad hoc mode. * Blinks together with STATUS LED when running in Configuration Mode .
⑧ STATUS LED (Green)	ON : A network connection is established. BLINK : Transferring data. * Blinks together with WLAN LED when running in Configuration Mode .
⑨ Ethernet address	The Ethernet (MAC) Address of this product is found on the bottom. The last 6 digits are the product's serial number. Example) If the Ethernet Address is 00:80:92:00:11:22 (noted as 008092001122) then the product's serial number is 001122.

Step1 Start in Configuration Mode

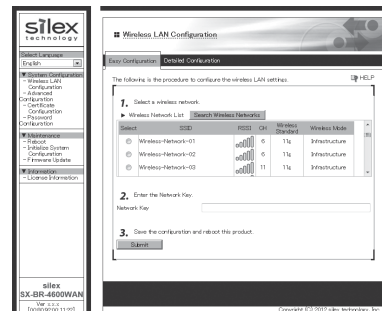
- 1** Connect this product to the PC using the network cable that came with this product.
- 2** Connect the AC adapter to this product, and the AC adapter's plug to an electrical outlet.
- 3** When the POWER LED (at the top) turns ON, press and hold the push switch (at the front). Release the push switch when WLAN LED and STATUS LED start to blink together (It may take 20sec until blinking). This product will start running in the **Configuration Mode** then. Now you can configure this product from the PC that has been connected to this product via a network cable.



* If wireless LAN is enabled on your PC, please disable it.

Step2 Setup

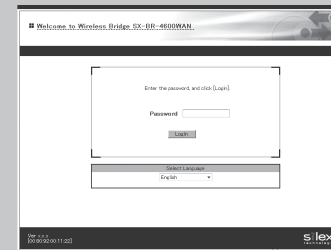
- 1** Start a Web browser (Internet Explorer, Safari, etc) on the PC you are using for the setup. The Web page of this product is displayed.



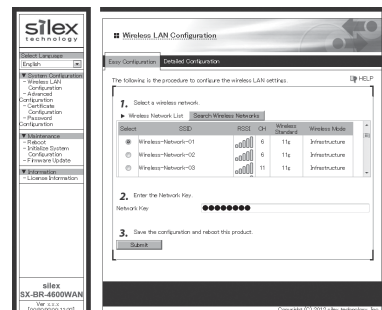
* If the Web page is not displayed, enter "silex" in the address bar of the Web browser and press the **Enter** key.



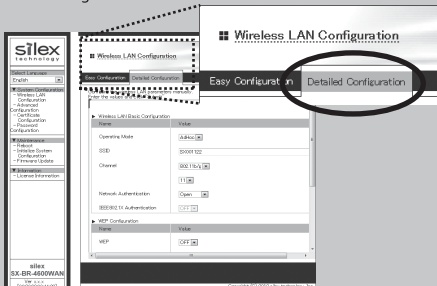
* If a password is set to this product, a password entry screen is displayed. Enter the password and click **Login**.
* This screen is not displayed at the initial setup. Go on to **2** then.



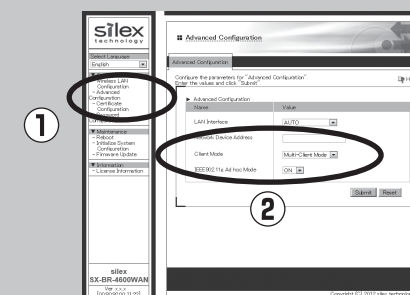
- 2** In the Web page, select the destination network from the **Wireless Network List** and enter the WEP Key or Shared Key for the **Network Key**. Click **Submit** when finished.



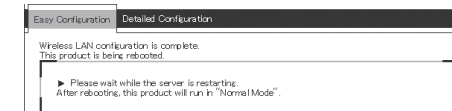
* If the destination network is not displayed in the **Wireless Network List**, click **Detailed Configuration** at the top of the page. In the page displayed, enter the wireless settings of the network that you wish to connect this product to, and click the **Submit** button. Refer to the **HELP** for details on each setting.



* To connect multiple network devices using an Ethernet HUB, click **Advanced Configuration** and select **Multi-Client Mode** for **Client Mode**. For details, refer to **Other functions** on the back of this setup guide.



- 3** Once a message appears indicating that the configuration has been completed, close the Web browser.

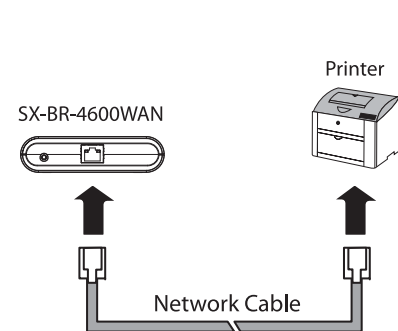


- 4** The configuration has now been completed. To give a wireless feature to the same PC (the one you have been using for configuration), please restart the PC. To give a wireless feature to the other device, turn off both this product and the PC, and remove this product from the PC. Refer to **Step3** to connect this product to the network device using a network cable.

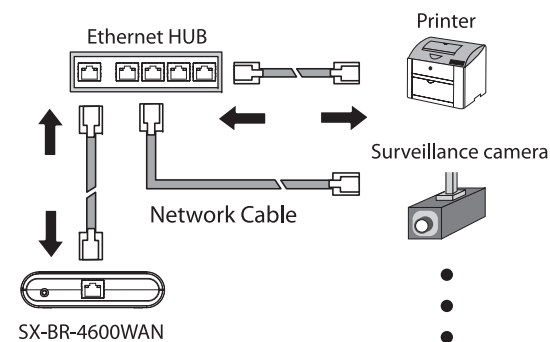
Step3 Connect to the network device you wish to use wirelessly

- 1** Turn off the network device that you wish to use wirelessly via this product. Connect it to this product using the network cable.

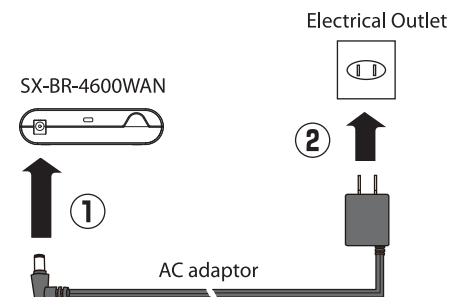
Sample connection in Single Client Mode



Sample connection in Multi-Client Mode



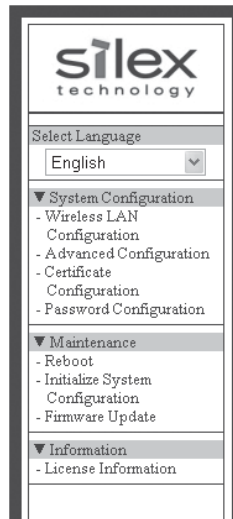
- 2** Connect the AC adapter to this product and the AC adapter's plug to the electrical outlet.



- 3** Turn on the network device connected to this product.

* Some network devices may require additional network settings. In such cases, refer to the manual that came with the network device.

* When turning on this product and network devices, be sure to turn on this product first. Also, do not press the push switch then.



Tips on Troubleshooting

This section explains the troubleshooting procedures to resolve possible problems you may experience while installing this product. Please also refer to the FAQ and the latest information about this product at the Silex web site (<http://www.silex.jp/>).

Q: An error message is displayed when accessing the Web page.

A1: Please confirm this product is running in **Configuration Mode**.
This product will accept accesses from a Web browser only when it is running in **Configuration Mode**.
If this product is running in **Configuration Mode**, WLAN LED and STATUS LED should blink together.
For how to start in **Configuration Mode**, refer to **Step1 Start in Configuration Mode**.

A1: Please confirm this product is NOT running in **Configuration Mode**.
If this product is running in **Configuration Mode**, WLAN LED and STATUS LED should blink together. In such a case, please restart this product, making sure not to push the push switch then.

- Is the network device turned on?
- Is the wired LAN to which the network device is connected working?
If the LED status does not change even after checking the connection, access the Web page of this product and click **Advanced Configuration**. In the page displayed, enter the Ethernet address of the network device into **Network Device Address**.

A3: Verify that the network settings of the network device are properly configured.
Remove this product from the network device and try to use the network device via the wired LAN without this product. If you still cannot communicate with the network device, the network setting of the network device may need to be changed.

A5: If POWER LED flashes rapidly, the network device may have been connected to the other device while this product is running. In this case, reboot this product and then the network device.

* Please contact our customer support in case you